



Address: Zhenzhou City, Henan province, China.
Email: info@sevenscrane.com
Tel: (00)86-371-55576206
Mob&WhatsApp&Wechat: (00)86-182-37120067
Web: www.sevenscrane.com



Spider Crane



The world's most cost-effective mini crane
Henan Seven Industry Co., Ltd

SS1.0 SS3.0
SS5.0 SS8.0

Company Profile

Founded in 1988, Henan Seven Industry Co., Ltd is a set of design, development, production, sales of industrial cranes as one of the company. Products include intelligent cranes, gantry cranes, bridge cranes, jib cranes, KBK cranes, spider cranes, electric hoist, electric hoist, crane accessories. The products are widely used in industries including machinery, power industry, railways, water conservancy, ports, mines, coal, petroleum, chemical industries, etc., and products are exported to over 60 countries and regions.

Spider crane is widely used in workshop equipment inspection and maintenance, power inspection and maintenance, chemical workshop inspection and maintenance, building curtain wall installation, railway station construction, cemetery stone industry and other small space occasions.

Our slogan is "quality is the soul we sell for future", our company has ISO certificate, CE certificate.

The company carries out the international technology exchange extensively. We carry out all-round technical cooperation with Japanese, German and American companies. The company has strong technical research and development ability, a high-quality scientific research team, with various welding and CNC machining equipment, can carry out special design according to user requirements, to meet the requirements of different industries.



CE



CE



CE



ISO



ISO



ISO

SS1.0



Model: SS1.0
Capacity: 1T
Max ground lifting height: 5.6M
Max underground lifting height: 18M
Max working radius: 5.07M
Dimension: 2140mmX600mmX1413mm
Weight: 1230KG

SS3.0



Model: SS3.0
Capacity: 3T
Max ground lifting height: 9.2M
Max underground lifting height: –
Max working radius: 8.30M
Dimension: 2900mmX800mmX1580mm
Weight: 2050KG

SS5.0



Model: SS5.0
Capacity: 5T
Max ground lifting height: 16.8M
Max underground lifting height: 20.5M
Max working radius: 16.00M
Dimension: 4950mmX600mmX2235mm
Weight: 6000KG

SS8.0

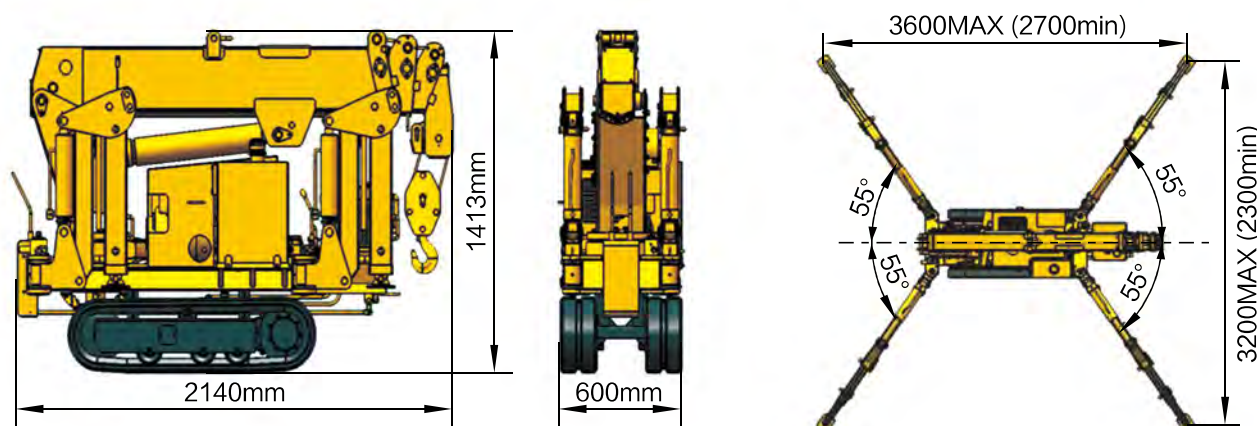


Model: SS8.0
Capacity: 8T
Max ground lifting height: 17.8M
Max underground lifting height: –
Max working radius: 15.7M
Dimension: 5033mmX1560mmX2278mm
Weight: 6500KG

Henan Seven Industry Co., Ltd MINI CRAWLER CRANE SS1.0

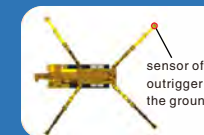
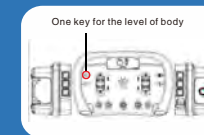
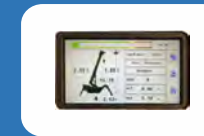


Dimensions



SS1.0

SEVENCrane



Product Features

- **Proportional remote control and proportional valve (optional)**
It can not only control the crane remotely, but also make the heavy object to be lifted gradually.
Especially suitable for mechanical installation, used in places with high precision of position.
- **Moment limiter(optional)**
Accurately display the weight of the object to be hoisted, make it clear at a glance to protect the safety of the lifting arm.
- **Outrigger by remote control (optional)**
The outrigger can be controlled in close range to avoid accidents when the outrigger cannot be seen in complex environment.
- **U boom (optional)**
Reasonable structure, only one weld, large contact area between the boom, high strength, long service life.
- **Take the elevator**
The fuselage is 600mm wide and can be operated in a 3-ton elevator or indoors.
- **One key for the level of body (optional)**
The outriggers can be operated separately according to the surrounding environment, or the four outriggers can be controlled by the computer at the same time to achieve one-key leveling and keep the body in a horizontal state.
- **Interlock system (optional)**
After the boom is restored, the outriggers can be operated and crane can move to protect the crane's walking safety.
- **Travel available by forklift truck**
The crane is provided with a forklift position to facilitate forklift transport
- **Remote control walking (optional)**
The machine can be operated from a long distance, which can better protect people's safety in bad environment.
- **Sensor of outrigger on the ground**
Each outrigger is equipped with a grounding sensor. When the outrigger leaves the ground in danger, the machine will alarm and stop working to ensure that the machine will not overturn.



Product Parameters SS1.0

Model	SS1.0	
Specification	1.0T × 1.5m	
Maximum Working Radius	5.07m × 0.2T	
Maximum Ground Lifting Height	5.6m	
Maximum Underground Lifting Height	18m	
Winch Device	Hook Speed	10m/min
	Rope	Φ7.7mm × 48m
Telescopic System	Boom Type	Full automatic 4 section
	Boom Length	2.08m–5.5m
Up and Downs	Boom Angle/Time	0° ~75° /14sec
Slew System	Slew Angle/ Time	0° ~360° (Continuous)/40sec
Outrigger	Outrigger Active Form	Automatic for the 1 section, manual adjustment for 2,3 section
	Maximum Extended Dimensions	3600mm × 3200mm
Traction system	Walking Way	Hydraulic motor driven
	Walking Speed	0–3.2km/ h
	Grade Ability	20°
	Ground Length × Width × 2	960mm × 180 mm × 2
	Ground Pressure	35.6kpa (0.356 kgf / cm ²)
Petrol Engine	Model	(HONDA) GX270
	Displacement	270ml
	Maximum Output	5.1Kw/ 1800rpm
	Starting Method	Electric starting
	Fuel/Tank Capacity	Petrol/6L
Safety Devices	Outrigger automatic detection alarm、level、 Intelligent leveling、 Emergency stop button	
System Voltage	DC12V	
Dimension	Length × Width × Height	2140mm × 600mm × 1413mm
Weight	Vehicle Weight	1230kg



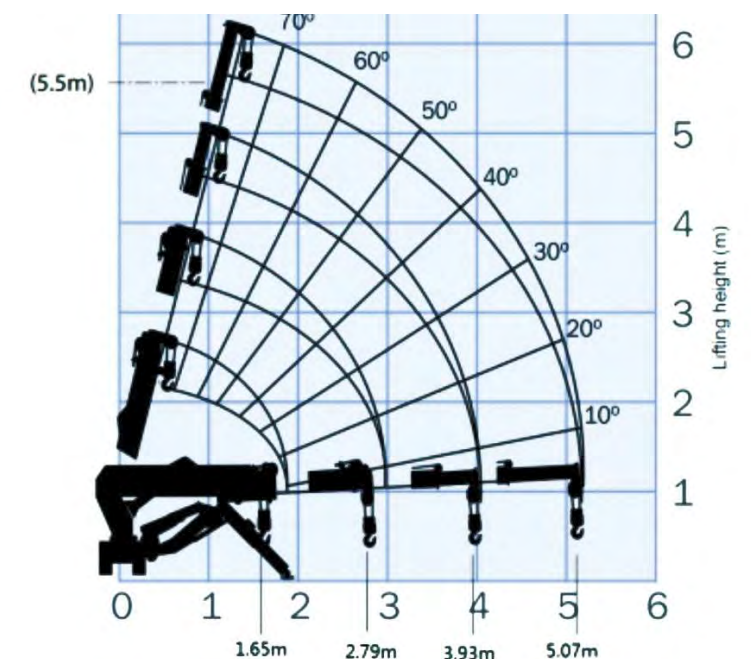
Lifting Table at Maximum Extended Outrigger

2.08m boom		3.22m boom		4.36m boom		5.5m boom	
Working Radius (m)	Rated Load (t)	Working Radius (m)	Rated Load (t)	Working Radius (m)	Rated Load (t)	Working Radius (m)	Rated Load (t)
<1.5	1.0	<1.5	1.0	<1.8	0.85	<2.5	0.65
1.65	0.92	2.0	0.8	2.0	0.8	3.0	0.53
		2.5	0.65	2.5	0.65	3.5	0.4
		2.79	0.56	3.0	0.53	4.0	0.32
				3.5	0.41	4.5	0.27
				3.93	0.33	5.00	0.21
						5.07	0.2

- The above data is measured when outriggers are at the maximum level on solid ground.The outriggers' state and surface conditions may have resulted in the crane tipping, please pay more attentionnote when operate.
- Total rated lifting capacity includes hook (20Kg) weight.



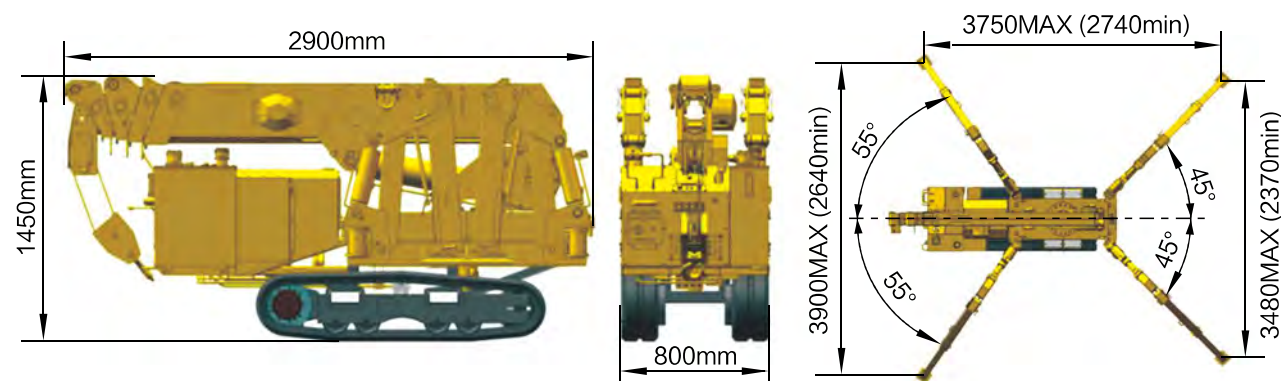
Working radius figure



Henan
Seven Industry Co., Ltd
MINI CRAWLER CRANE
SS3.0

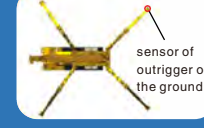
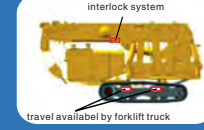
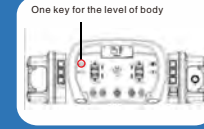
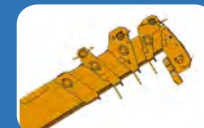
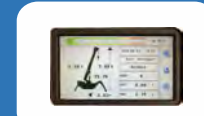


Dimensions



SS3.0

SEVENCrane



Product Features

- **Proportional remote control and proportional valve (optional)**
It can not only control the crane remotely, but also make the heavy object to be lifted gradually. Especially suitable for mechanical installation, used in places with high precision of position.
- **Moment limiter (optional)**
Accurately display the weight of the object to be hoisted, make it clear at a glance to protect the safety of the lifting arm.
- **380v Electric power**
Electric power, no noise, environmental protection, quiet.
- **Outrigger by remote control (optional)**
The outrigger can be controlled in close range to avoid accidents when the outrigger cannot be seen in complex environment.
- **Five section boom and double connecting cylinder**
Five section boom, extended long, shrink short, true double connecting cylinder, can achieve a certain weight with the telescopic.
- **1.2 height of body**
The maximum height of the body is 1.2 meters, which is convenient for light trucks to pass through the bottom and transport.
- **U boom**
Reasonable structure, only one weld, large contact area between the boom, high strength, long service life.
- **Take the elevator**
The fuselage is 800mm wide and can be operated in elevator or indoors.
- **One key for the level of body (optional)**
The outriggers can be operated separately according to the surrounding environment, or the four outriggers can be controlled by the computer at the same time to achieve one-key leveling and keep the body in a horizontal state.
- **Interlock system**
After the boom is restored, the outriggers can be operated and crane can move to protect the crane's walking safety.
- **Travel available by forklift truck**
The crane is provided with a forklift position to facilitate forklift transport.
- **Remote control walking (optional)**
The machine can be operated from a long distance, which can better protect people's safety in bad environment.
- **Sensor of outrigger on the ground**
Each outrigger is equipped with a grounding sensor. When the outrigger leaves the ground in danger, the machine will alarm and stop working to ensure that the machine will not overturn.



Product Parameters SS3.0

Model		SS3.0
Specification		2.95T × 1.3m
Maximum Working Radius		8.3m × 0.14T
Maximum Ground Lifting Height		9.2m
Maximum Underground Lifting Height		—
Winch Device	Hook Speed	6.5m/min
	Rope Type	Φ7.7mm × 45m
Telescopic System	Boom Type	Full automatic 5 section
	Boom Length	2.56m–8.92 m
	Telescopic Length/Time	
Up and Downs	Boom Angle/Time	0° –75° /14sec
Slew System	Slew Angle/ Time	0° –360° (continuous) /40sec
Outrigger	Maximum Extended Dimensions	3900mm × 3750mm
Traction system	Walking Way	Hydraulic motor driven
	Walking Speed	0–2.9km/ h
	Ground Length × Width × 2	1010mm × 200mm × 2
	Grade Ability	20°
	Ground Pressure	51Kpa
Safety Devices	Onekey leveling、Torque limiter、Height limiter、Crane outrigger sensor、Alarm device、Emergency button	
System Voltage	DC12V	
Diesel Engine (Optional)	Model	3TNV70
	Displacement	0.854L
	Maximum Output	10.3KW
	Starting Method	Electric starting
	Fuel Tank Capacity	11L
	Operating Temperature	–5° C–40° C
	Battery Capacity	12V 45Ah
Petrol Engine	Model	CH440
	Displacement	429ml
	Maximum Output	14KW
	Starting Method	Recoil start/Electric starting
	Fuel Tank Capacity	7.4L
	Operating Temperature	–5° C–40° C
	Battery Capacity	12V 45AH
Electric Motor	Power Supply Voltage	(Standard) AC380v
	Power	4KW
Remote Control	Type	BOX1.1 (Optional)
	Operating range	100m
	Water–proof Standards	IP67
Dimension	Length × Width × Height	2900mmx800mmx1580mm
Weight	Vehicle Weight	2050Kg



lifting Charts -- SS3.0

- The above data is measured on solid level ground when L .egs fully extended .The outrigger state and surfaceconditions may have resulted in the crane tipping, please pay more attentionnote when operate.
- Rated lifting capacity chart is based on the actual working radius,and the boom deformation when lifting is also taken into account.
- When outriggers are extended or fixed by jig,the crane lifting based on the rated load will also tip over. Please pay more attentionnote when operate.
- Total rated lifting capacity includes hook (20Kg) weight.



Total rated load outriggers at maximum positions

2.56/4.18m boom		5.8m boom		7.34m boom		8.92m boom	
Working Radius (m)	Rated Load (t)	Working Radius (m)	Rated Load (t)	Working Radius (m)	Rated Load (t)	Working Radius (m)	Rated Load (t)
1.3	2.95	2	2.28	2.5	1.76	3	1.2
1.5	2.89	2.5	1.93	3	1.45	3.5	1.05
2	2.67	3	1.57	3.5	1.12	4	0.86
2.5	2.32	3.5	1.19	4	0.9	4.5	0.68
3	1.59	4	0.95	4.5	0.68	5	0.62
3.5	1.25	4.5	0.68	5	0.63	5.5	0.56
3.64	1.05	5	0.65	5.5	0.59	6	0.4
		5.2	0.58	6	0.44	6.5	0.31
				6.5	0.37	7	0.28
				6.75	0.32	7.5	0.25
						8	0.22
						8.3	0.21



Total rated load outriggers at any other positions

2.56/4.18m boom		5.8m boom		7.34m boom		8.92m boom	
Working Radius (m)	Rated Load (t)	Working Radius (m)	Rated Load (t)	Working Radius (m)	Rated Load (t)	Working Radius (m)	Rated Load (t)
<1.30	1.80	<2.90	0.55	<3.60	0.40	<4.00	0.33
1.50	1.72	3.00	0.53	4.00	0.33	4.50	0.28
2.00	1.20	3.50	0.41	4.50	0.28	5.00	0.23
2.50	0.80	4.00	0.33	5.00	0.23	5.50	0.18
3.00	0.52	4.50	0.28	5.50	0.18	6.00	0.16
3.50	0.42	5.00	0.23	6.00	0.16	6.50	0.14
3.64	0.35	5.20	0.20	6.50	0.15	7.00	0.10
				6.75	0.14	7.50	0.09
						8.00	0.08
						8.30	0.07

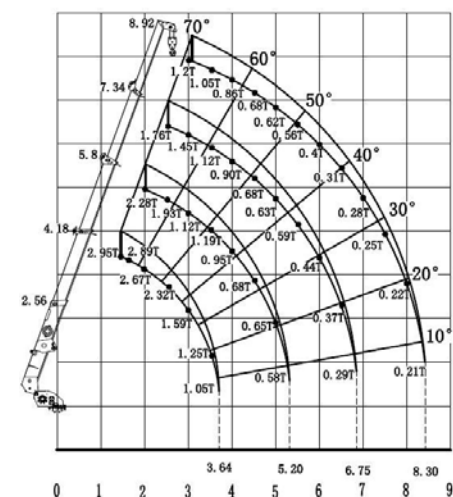


Maximum Reach Below Ground level

Rate	Height
Four Fall	9m
Two Fall	18.0m
Single Fall	36.0m

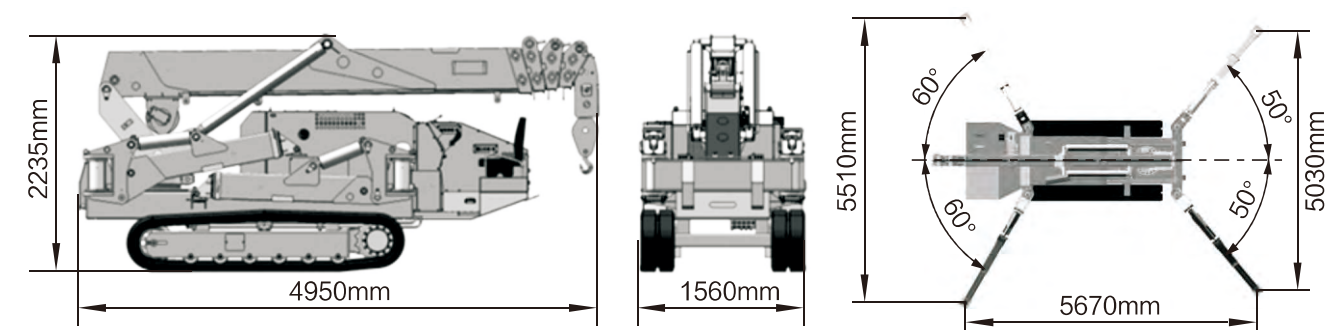


Working Range Diagram

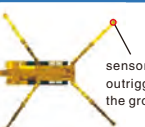
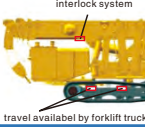
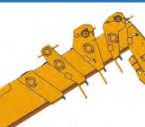


Henan
Seven Industry Co., Ltd
MINI CRAWLER CRANE
SS5.0

Dimensions



SS5.0



Product Features

- Proportional remote control and proportional valve (optional)

It can not only control the crane remotely, but also make the heavy object to be lifted gradually. Especially suitable for mechanical installation, used in places with high precision of position.

- Moment limiter

Display different operation radius, different lifting weight, protecting boom can not overload.

- 380v Electric power

Electric power, no noise, environmental protection, quiet.

- Outrigger by remote control

The outrigger can be controlled in close range to avoid accidents when the outrigger cannot be seen in complex environment.

- Five section boom and double connecting cylinder

Five section boom, extended long, shrink short, true double connecting cylinder, can achieve a certain weight with the telescopic.

- U boom

Reasonable structure, only one weld, large contact area between the boom, high strength, long service life.

- One key for the level of body

The outriggers can be operated separately according to the surrounding environment, or the four outriggers can be controlled by the computer at the same time to achieve one-key leveling and keep the body in a horizontal state.

- Interlock system

After the boom is restored, the outriggers can be operated and crane can move to protect the crane's walking safety.

- Remote control walking (optional)

The machine can be operated from a long distance, which can better protect people's safety in bad environment.

- Sensor of outrigger on the ground

Each outrigger is equipped with a grounding sensor. When the outrigger leaves the ground in danger, the machine will alarm and stop working to ensure that the machine will not overturn.



Product Parameters SS5.0

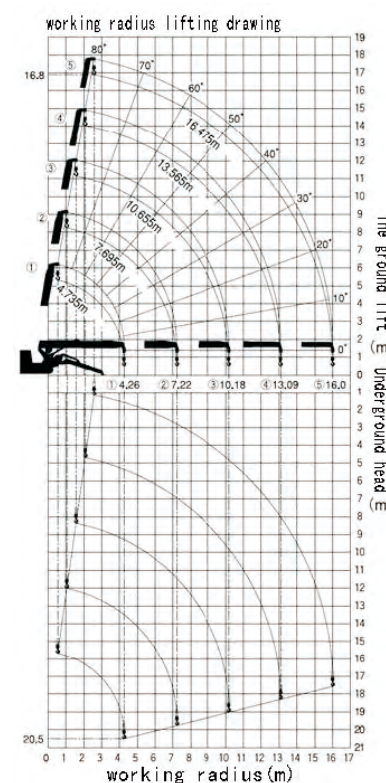
Model	SS5.0	
Specification	5.00T × 2.0m	
Maximum Working Radius	16m × 0.21T	
Maximum Ground Lifting Height	16.8m	
Maximum Underground Lifting Height	20.5m	
Winch Device	Hook Speed	12m/min)
	Rope	φ 12mm × 120m
Telescopic System	Boom Type	Full automatic 5 section
	Boom Length	4.7m-16.5m
	Telescopic Length/Time	11.7m/54sec
Up and Downs	Boom Angle/Time	0° -80° /24.5sec
Slew System	Slew Angle/ Time	0° -360°(Continuous)/2.1rpm
Outrigger	Outrigger Active Form	manual adjustment for the 1 section. Automatic for the 2,3 section
	Maximum Extended Dimensions	5670mm × 5510mm × 5030mm
Traction system	Walking Way	Hydraulic motor
	Walking Speed	0~2.5KM/h
	Grade Ability	20°
	Ground Length × Width	1720mm × 320 mm × 2
	Ground Pressure	49.0kpa (0.50 kgf / cm ²)
Electric Motor	Model	YYB160M-4
	Working Voltage	380V (Hz50)
	Power	11Kw
Diesel Engine	Model	4TNV88(YANMAR)
	Displacement	2.19L
	Maximum Output	25.2Kw/2200 min-1
	Starting Method	Electric Start
	Fuel	Fuel Oil
Safety Devices	Torque limiter、Alarm device、Status light、Emergency button、Overturn-preventing system、Onekey leveling	
System Voltage	DC12V	
Dimension	Length × Width × Height	4950mm × 1560mm × 2235mm
Weight	Vehicle Weight	6000kg



Total rated load outriggers at maximum positions

4.74/7.70m boom		10.65m boom		13.56m boom		16.50m boom	
Working Radius (m)	Rated Load (t)	Working Radius (m)	Rated Load (t)	Working Radius (m)	Rated Load (t)	Working Radius (m)	Rated Load (t)
<2.0	5.00	<3.5	3.03	<4	2.23	<5	1.13
2.5	4.16	4	2.58	4.5	1.93	5.5	0.98
3	3.46	5	2.03	5	1.73	6	0.91
3.5	3.05	6	1.68	6	1.40	7	0.76
4	2.60	7	1.38	7	1.18	8	0.65
5	2.08	8	1.13	8	1.03	9	0.60
6	1.72	9	1.05	9	0.93	10	0.55
7.18	1.45	10	0.86	10	0.83	11	0.49
				11	0.69	12	0.44
				12	0.53	13	0.38
				13	0.43	14	0.32
						15	0.26
						16	0.21

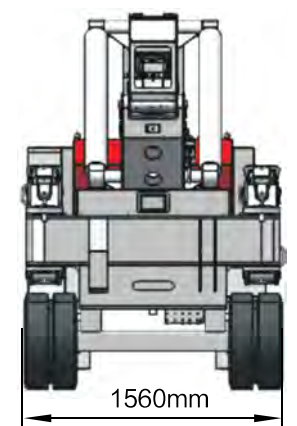
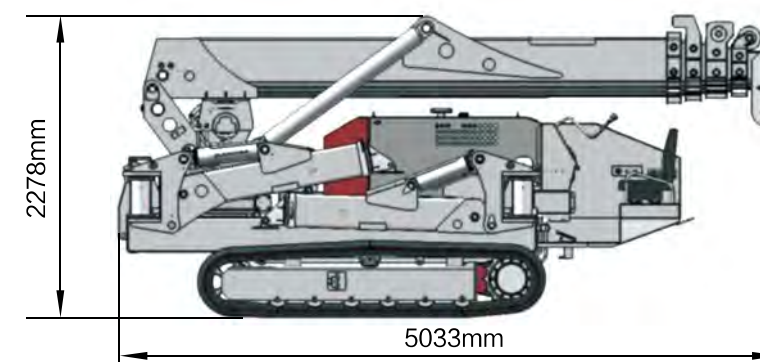
Working radius figure



- The above data is measured when outriggers are at the maximum level on solid ground. The outriggers' state and surface conditions may have resulted in the crane tipping, please pay more attention when operate.
- Total rated lifting capacity includes hook (52Kg) weight.

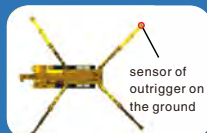
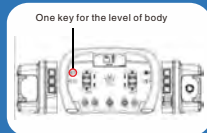
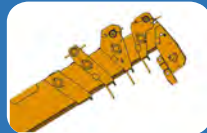


Dimensions



Henan
Seven Industry Co., Ltd
MINI CRAWLER CRANE
SS8.0

SS8.0



Product Features

●Proportional remote controle and proportional valve(optional)

It can not only control the crane remotely, but also make the heavy object to be lifted gradually.Especially suitable for mechanical installation, used in places with high precision of position.

●Moment limiter

Display different operation radius, different lifting weight, protecting boom can not overload.

●380v Electric power

Electric power, no noise, environmental protection, quiet.

●Outrigger by remote control

The outrigger can be controlled in close range to avoid accidents when the outrigger cannot be seen in complex environment.

●Five section boom and double connecting cylinder

Five section boom, extended long, shrink short, true double connecting cylinder, can achieve a certain weight with the telescopic.

●U boom

Reasonable structure, only one weld, large contact area between the boom, high strength, long service life.

●One key for the level of body

The outriggers can be operated separately according to the surrounding environment, or the four outriggers can be controlled by the computer at the same time to achieve one-key leveling and keep the body in a horizontal state.

●Interlock system

After the boom is restored, the outriggers can be operated and crane can move to protect the crane's walking safety.

●Remote control walking(optional)

The machine can be operated from a bad long distance, which can better protect people's safety in environment.

●Sensor of outrigger on the ground

Each outrigger is equipped with a grounding sensor. When the outrigger leaves the ground in danger, the machine will alarm and stop working to ensure that the machine will not overturn.



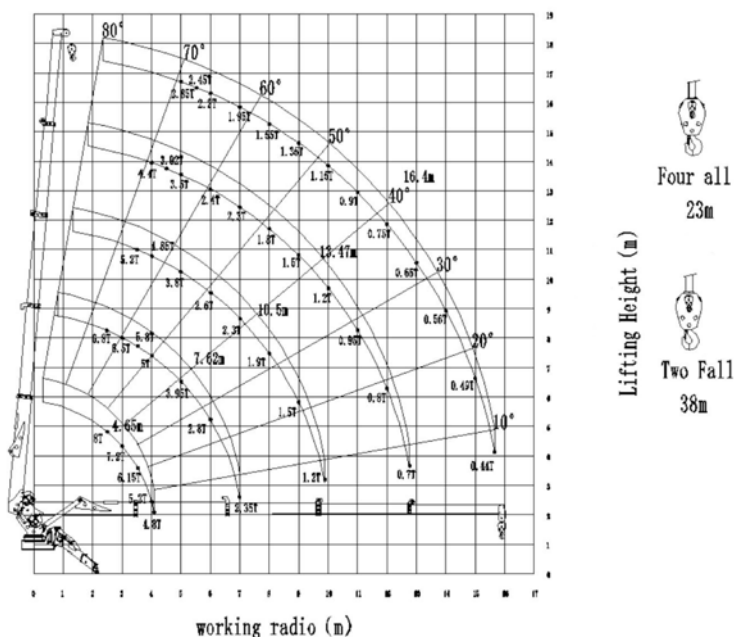
Product Parameters SS8.0

Model	SS8.0	
Specification	8.00t × 2.5m	
Maximum Working Radius	15.7m × 0.45t	
Maximum Ground Lifting Height	17.8m	
Winch Device	Hook Speed	10m/min 4
	Rope	Φ 12mm × 120m
Telescopic System	Boom Type	U5
	Boom Length	4.65m~16.4m
	Telescopic Length/Time	34sec
Up and Downs	Boom Angle/Time	0~80° /24.5sec
Slew Angle/ Time	Slew System	360°/2.1rpm
Outrigger	Outrigger Active Form	manual adjustment for the 1 section. Automatic for the 2,3 section
	Maximum Extended Dimensions	5670mm × 5510mm × 5030mm
Traction system	Walking Way	Hydraulic motor
	Walking Speed	0~1.5km/ h
	Grade Ability	20°
	Ground Length × Width	1720mm × 320 mm
	Ground Pressure	49.0kpa (0.50 kgf / cm ²)
Diesel Engine	Model	4TNV88(YANMAR)
	Displacement	2.19L
	Maximum Output	25.2kw/ 2200 min-1
	Starting Method	Electric Start
	Fuel	Diesel oil
Electric Motor	Fuel tank capacity	45L
	Model	YYB160M-4
	Working Voltage	380V (Hz50)
Dimension	Power	11Kw
Weight	Length × Width × Height	5033mm × 1560mm × 2278mm
Tank Capacity	Vehicle Weight	6500kg
		100L
Safety Devices	Torque limiter、Status light、Alarm device、Emergency button、Overturn-preventing system、interlock control system、Onekey leveling	

S Total rated load outriggers at maximum positions

4.65(m)		4.65-7.62(m)		7.62-10.5(m)		10.5-13.47(m)		13.47-16.4(m)	
Working Radius (m)	Rated Load (t)	Working Radius (m)	Rated Load (t)	Working Radius (m)	Rated Load (t)	Working Radius (m)	Rated Load (t)	Working Radius (m)	Rated Load (t)
<2.5	8	<2.5	6.8	<3.5	5.2	<4	4.4	<5	2.85
3	7.2	3	6.5	4	4.85	4.5	3.92	5.5	2.45
3.5	6.15	3.5	5.8	5	3.8	5	3.5	6	2.2
4	5.2	4	5	6	2.6	6	2.4	7	1.95
4.1	4.8	5	3.95	7	2.3	7	2.3	8	1.55
		6	2.8	8	1.9	8	1.8	9	1.35
		7	2.35	9	1.5	9	1.5	10	1.15
				9.9	1.2	10	1.2	11	0.9
						11	0.95	12	0.75
						12	0.8	13	0.65
						12.8	0.7	14	0.56
								15	0.49
								15.7	0.45

S Working radius figure



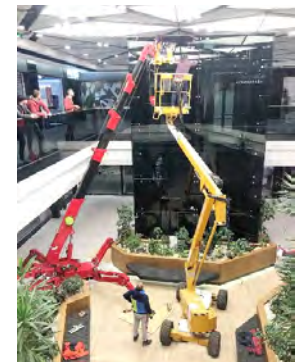
Curtain wall installation



installation of glass



building construction



shopping mall decoration

Electric power maintenance



electric power maintenance



electric power maintenance



indoor installation of substation

Indoor and outdoor steel structure installation



indoor structural installation



installation of steel structure of workshop



installation of steel structure of workshop

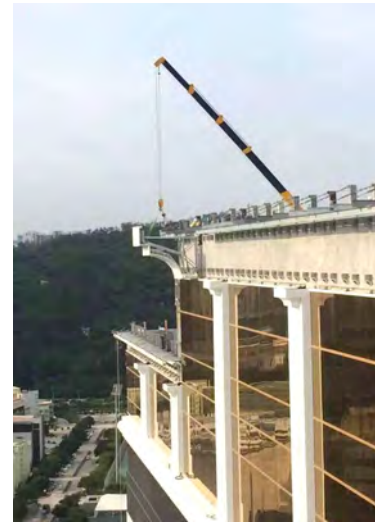
Other application



metro construction



railway construction



hotel decorate

Electric power maintenance



gardening construction

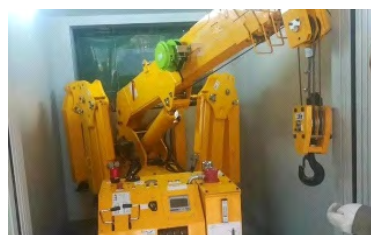


the top housing construction



helicopter maintenance

Electric power maintenance



enter the elevator to upper floor



assembly line



pre-factory test

Cooperation

Foreign experts are hired to assist in quality management



Foreign partners visiting the company

